



Mallets Weight Refer To The Heads Of The Mallets



Ø 20 mm

1/2

06-8271
MEAD
185 g
with interchangeable
plastic disks
190 mm
06-8272
pair of spare disks



Ø 25 mm

1/2

06-8273
140 g
with interchangeable
plastic disks
185 mm
06-8274
pair of spare disks



Ø 30 mm

1/2

06-8275
COTTLE
240 g
1 Side flat
1 Side convex
185 mm



Ø 22 mm

1/2

06-8276
165 g
lead filled head
190 mm



Mallets, Weights Refer To The Heads Of The



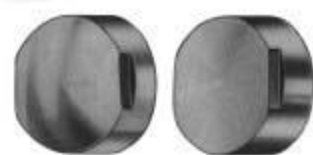
06-8277
HAJEK
140 g
220 mm



06-8278
215 g
with interchangeable
plastic disks
245 mm
06-8279
pair of spare disks



06-8280 - 06-8283
WAGNER
complete with:
1 pair of metal disks (**06-8281**) and
1 pair of plastic disks (**06-8282**) and
1 wrench (**06-8283**)
235 mm



06-8281 230g
1 metal disk, flat
1 metal disk, convex



06-8282 32g
1 plastic disk, flat
1 plastic disk, convex



06-8283
Wrench



Mallets Weight Refer To The Heads Of The Mallets



06-8284 300g
BERGMANN
245 mm



06-8285 300g
BERGMANN
235 mm



06-8286 550g
OMBREDANNE
240 mm



06-8287
HEATH
copper filled head
700 g
185 mm



Tampers - Osteotomes, Chisels and Gouges



06-8288
HAASE
100 mm



06-8289 - 06-8290
PASSOW
120 mm



06-8291 - 06-8293
CASPAR
200 mm



06-8294 - 06-8296
200 mm



06-8297 4mm
FREER
Chisel
160 mm



06-8298 4mm
FREER
Chisel, curved
160 mm



06-8299 6mm
FREER
Gouge
150 mm



06-8300 3.4mm
Scaphoid gouge,
downwards curved
135 mm



06-8301 3.4mm
Scaphoid gouge,
upwards curved
135 mm



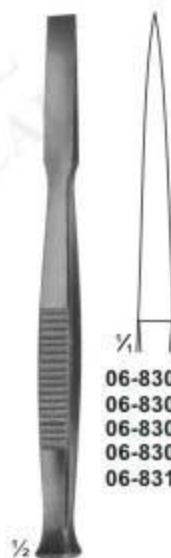
06-8302 - 06-8304
MANNERFELT modif
Osteotomes
06-8302 4 mm
06-8303 6 mm
06-8304 8 mm
155 mm



Osteotomes Chisels and Gouges

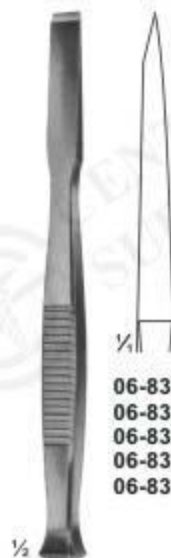


06-8305 3mm
MANNERFELT modif.
Gouge
155 mm



06-8306 - 06-8310
Osteotomes
140 mm

06-8306 4 mm
06-8307 6 mm
06-8308 8 mm
06-8309 10 mm
06-8310 12 mm



06-8311 - 06-8315
Chisels
140 mm

06-8311 4 mm
06-8312 6 mm
06-8313 8 mm
06-8314 10 mm
06-8315 12 mm



06-8316 - 06-8320
Gouges
140 mm

06-8316 4 mm
06-8317 6 mm
06-8318 8 mm
06-8319 10 mm
06-8320 12 mm



PARTSCH
06-8321 - 06-8324
Chisels
140 mm

06-8321 3 mm
06-8322 4 mm
06-8323 5 mm
06-8324 6 mm



PARTSCH
06-8325 - 06-8329
Chisels
170 mm

06-8325 3 mm
06-8326 4 mm
06-8327 5 mm
06-8328 6 mm
06-8329 7 mm



PARTSCH
06-8330 - 06-8333
Gouges
140 mm

06-8330 3 mm
06-8331 4 mm
06-8332 5 mm
06-8333 6 mm



PARTSCH
06-8334 - 06-8338
Gouges
170 mm

06-8334 3 mm
06-8335 4 mm
06-8336 5 mm
06-8337 6 mm
06-8338 7 mm



LUCAS
06-8339 - 06-8340
Chisels
160 mm

06-8339 4 mm
06-8340 6 mm

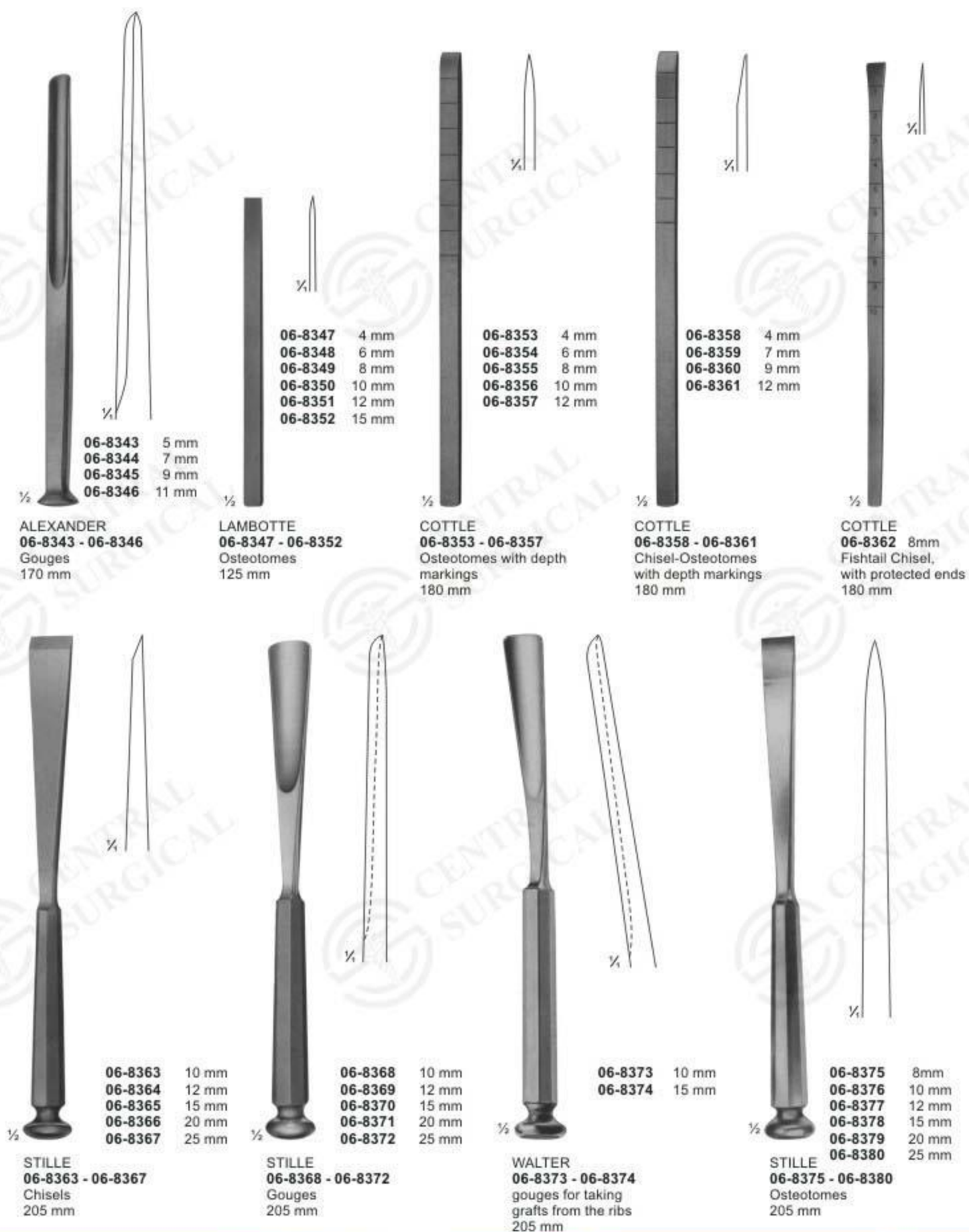


LUCAS
06-8341 - 06-8342
Gouges
160 mm

06-8341 3 mm
06-8342 5 mm



Osteotomes Chisels and Gouges





Osteotomes



06-8381	10 mm
06-8382	12 mm
06-8383	15 mm
06-8384	20 mm
06-8385	25 mm

STILLE
06-8381 - 06-8385
Osteotomes
205 mm



06-8386	10 mm
06-8387	12 mm
06-8388	15 mm
06-8389	20 mm
06-8390	25 mm

STILLE
06-8386 - 06-8390
Osteotomes, curved
205 mm



06-8391	4 mm
06-8392	8 mm
06-8393	10 mm
06-8394	13 mm
06-8395	15 mm
06-8396	18 mm
06-8397	20 mm
06-8398	25 mm
06-8399	30 mm
06-8400	38 mm
06-8401	44 mm
06-8402	50 mm

LAMBOTTE
06-8391 - 06-8402
Osteotomes
245 mm



06-8403	8 mm
06-8404	13 mm
06-8405	18 mm
06-8406	25 mm
06-8407	30 mm
06-8408	38 mm

LAMBOTTE
06-8403 - 06-8408
Osteotomes, curved
245 mm



Osteotomes, Chisels and Gouges with HARTPRESS -handle



06-8409	4 mm
06-8410	6 mm
06-8411	8 mm
06-8412	10 mm
06-8413	12 mm

LEXER-MINI
06-8409 - 06-8413
Osteotomes
180 mm



06-8414	4 mm
06-8415	6 mm
06-8416	8 mm
06-8417	10 mm
06-8418	12 mm

LEXER-MINI
06-8414 - 06-8418
Gouges
180 mm



06-8419	5 mm
06-8420	7 mm
06-8421	10 mm
06-8422	15 mm
06-8423	20 mm
06-8424	25 mm
06-8425	30 mm

LEXER
06-8419 - 06-8425
Gouges
220 mm



06-8426	5 mm
06-8427	7 mm
06-8428	10 mm
06-8429	15 mm
06-8430	20 mm
06-8431	25 mm
06-8432	30 mm

LEXER
06-8426 - 06-8432
Osteotomes
220 mm



06-8433 9mm
Gouge for
removing broken
screws
220 mm



06-8434	5,5 mm
06-8435	9,0 mm

ZIELKE
06-8434 - 06-8435
Gouges for
scoliosis-operations
230 mm



Osteotomes ,Chisels and Gouges with HARTPRESS -handle

Can be sterilized in a
steam sterilizer upto
3 bar over pressure
(143 °C).



06-8436 10 mm
06-8437 15 mm

LEXER
06-8436 - 06-8437
Osteotomes,
angled
275 mm



06-8438 10 mm
06-8439 15 mm

LEXER
06-8438 - 06-8439
Gouges,
angled
275 mm



06-8440 20mm
Chisel
245 mm



06-8441 16mm
Chisel, curved
265 mm



Reposition Forceps



06-8442
Reposition forceps,
for small fragments
135 mm



06-8443
HAASE
Reposition forceps,
for mandibular
fractures
165 mm



06-8444
REILL
Reposition forceps,
170 mm



06-8445
Reposition forceps
205 mm



06-8446
MEYER
Reposition forceps
for fingers, with drill
guide for KIRSCHNER
wires up to daim.1.0 mm
170 mm



Reposition Forceps, Bone Holding Forceps



06-8447
Patella forceps
185 mm



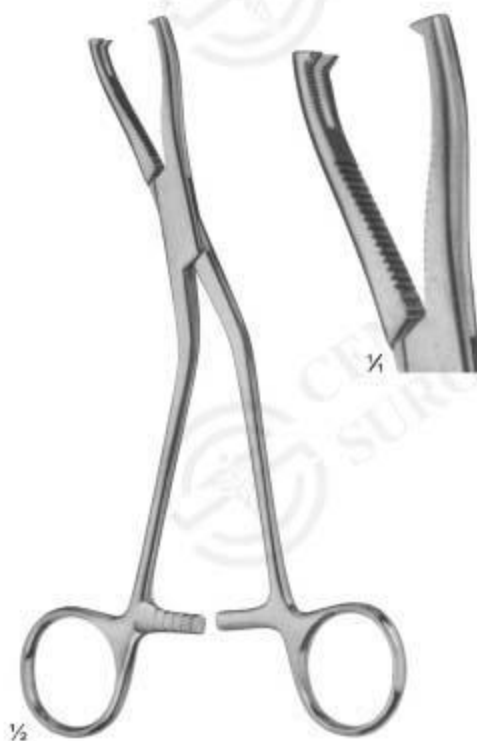
06-8448
Forceps with
ratchet fixation
140 mm



06-8449
Forceps with
thread fixation
170 mm



06-8450
Forceps with
thread fixation
235 mm



06-8451
DINGMANN modif
185 mm



Bone Holding Forceps



06-8452
Sequestrum
forceps
200 mm



06-8453
VAN BUREN
Sequestrum
forceps
225 mm



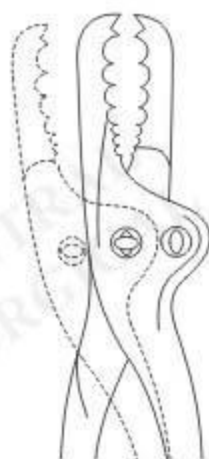
06-8454
LANGENBECK
205 mm



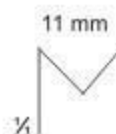
06-8455
FERGUSON
205 mm



Bone Holding Forceps



jaw adjustable



8 mm



06-8456
SEMB
190 mm



06-8457
FARABEU
230 mm



06-8458
FARABEU
255 mm



06-8459
FARABEU-LAMBOTTE
255 mm



Bone Holding Forceps



06-8460
KERN-LANE
240 mm



06-8461
LANE
330 mm



06-8462
KERN-LANE
240 mm



Bone Holding Forceps



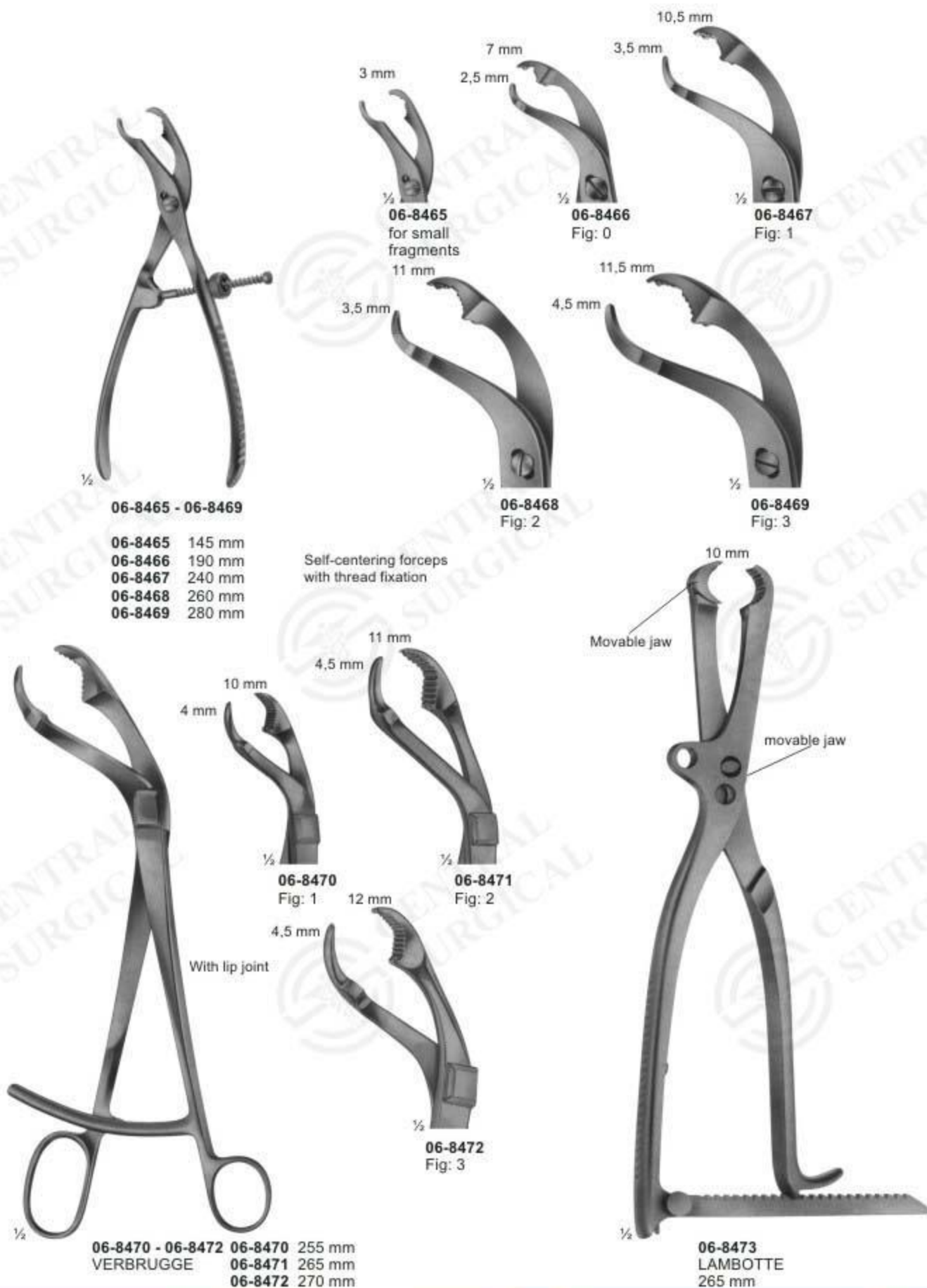
06-8463
LANE
320 mm



06-8464
HEY GROVES
305 mm



Bone Holding Forceps





Bone Clamps



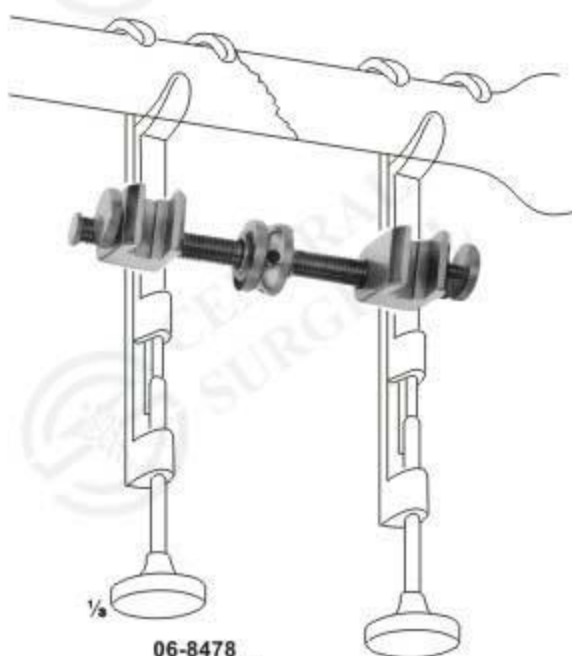
06-8474 - 06-8475
LOWMAN
06-8474 170 mm
06-8475 205 mm



06-8476
LOWMAN-GERSTER
210 mm



06-8477
LOWMAN-HOGLUND
175 mm



06-8478
GERSTER
Traction bar for **06-8474 - 06-8477**



Synovectomy-Rongeurs, Bone Rongeurs



06-8479 - 06-8480
Synovectomy rongeur
width of jaws 1.2 mm
130 mm



06-8481 - 06-8482
Synovectomy rongeur
width of jaws 2.0 mm
130 mm



06-8483
STELLBRINK
Synovectomy rongeur
175 mm



06-8484
STELLBRINK
Synovectomy rongeur
170 mm



06-8485
LUER-FRIEDMANN
145 mm



06-8486
140 mm



Bone Rongeurs



06-8487
LUER
150 mm



06-8488
LUER
155 mm



06-8489
BLUMENTHAL
155 mm



06-8490
BLUMENTHAL
150 mm



06-8491 - 06-8492
JANSEN
175 mm



06-8493
BANE-HARTMANN
175 mm



Bone Rongeurs



06-8494
ALEXANDER
140 mm



06-8495
JANSEN
190 mm



06-8496 - 06-8497
LEMPERT
200 mm



06-8498
BEYER
180 mm



06-8499
MEAD
165 mm



06-8500
MEAD
165 mm



Bone Rongeurs



06-8501 06-8502

06-8501 - 06-8502
LUER
175 mm



06-8503
LUER
180 mm



06-8504
LUER
180 mm



06-8505
OLIVECRONA
205 mm



06-8506 - 06-8507
BOHLER
155 mm



06-8508
MARQUARDT
200 mm



Bone Rongeurs



06-8509
RUSKIN
190 mm



06-8510
ROETTGEN-RUSKIN
240 mm



06-8511 - 06-8512
ECHLIN
230 mm



Bone Rongeurs



06-8513
STILLE
235 mm



06-8514
LEKSELL-STILLE
240mm



06-8515
STILLE-RUSKIN
240mm



Bone Rongeurs



06-8516
LUER-STILLE
225 mm



06-8517
LUER-STILLE
225 mm



Bone Rongeurs



06-8518
LUER-STILLE
270 mm



06-8519
SEMB
240 mm



Bone Cutting Forceps



06-8520
STAMM
150 mm



06-8521
KAZANJIAN
185 mm



06-8522 - 06-8525
LISTON



06-8522
140 mm



06-8524
200 mm



06-8523
170 mm



06-8525
220 mm



06-8526 - 06-8528
LISTON



06-8526
170 mm



06-8527
200 mm



06-8528
220 mm



Bone Cutting Forceps



06-8529
BOEHLER
145 mm



06-8530
RUSKIN-LISTON
190 mm



06-8531
RUSKIN-LISTON
190 mm



Bone Cutting Forceps



06-8532
LISTON
curved on flat
240 mm



06-8533
LISTON
straight
280 mm



06-8534
LISTON
curved on flat
280 mm



Bone Cutting Forceps



06-8535
LISTON-STILLE
265 mm



06-8536
LISTON-KEY-HORSLEY
(TUDOR EDWARDS)
255 mm



Meniscus-and Cartilage Forceps



06-8537
BIRCHER
200 mm



06-8538
BIRCHER
200 mm



06-8539
WELLER
200 mm



06-8540
BIRCHER-GANSKE
200 mm



06-8541
BIRCHER-GANSKE
200 mm



06-8542
MARTIN
205 mm



Meniscus Knives



06-8543
170 mm



06-8544
NEFF
215 mm



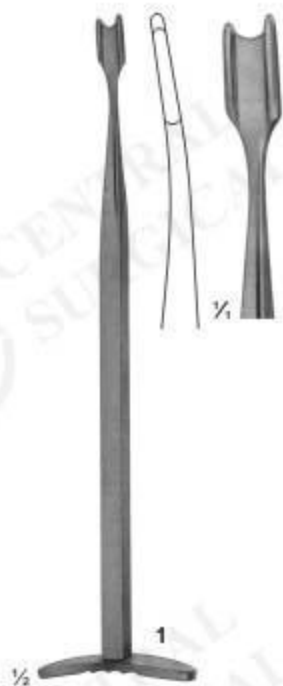
06-8545
NEFF
215 mm



06-8546
WAGNER
215 mm



Meniscus Knives



06-8547
SMILLIE
170 mm



06-8548
SMILLIE
170 mm



06-8549
SMILLIE
170 mm



06-8550
SALENIUS
220 mm



06-8551
SALENIUS
220 mm



06-8552
CANAD. MODELL
200 mm



06-8553
CANAD. MODELL
200 mm